

Network of the Future

Customer Value Proposition



WAY TO ZERO

NETWORK OF THE FUTURE



>90%
reliability once
fully phased in



Speed via
efficiency and
optimisation



Global reach
with local
service



We'll deploy a fleet of 300 vessels and capacity of 3.4 million TEU on Trans Suez routes and 341 vessels with 3.7 million TEU capacity via the Cape of Good Hope.



The new network gains its reliability and flexibility through the optimised use of our **fleets of mainline and shuttle vessels**, combined with the global network of **transshipment hubs and inland services**.



Maersk and Hapag-Lloyd have come together in a long-term operational collaboration – called the **Gemini Cooperation**.



This enhanced agility of the new network enables us to transport your containers on **major East-West trade lanes** via optimised routes to get ahead of potential delays and disruptions.

PRESENTING TWO NETWORK SOLUTIONS


We have and will continue monitoring the situation in the Middle East very closely and hope that the situation will soon be resolved.

So far, we have presented a network that transits through the Red Sea for the start of the Gemini partnership in February 2025. In addition, we are now also presenting an alternative Cape of Good Hope network following the same design principles and developed to deliver the reliability goals of the Gemini partnership.

We will return to the Red Sea as soon as it is safe to do so, but as the situation remains highly dynamic, we will be prepared for either scenario – a return to the Red Sea, or a continuation of the alternative route south of the Cape of Good Hope. There is still some time until the network will be phased in in February, we will continue monitoring the situation and update our customers as soon as additional information can be released.

Irrespective of whether the Gemini partnership will begin with a Trans Suez or Cape of Good Hope network, the ambition is to provide industry-leading reliability (90% SeaIntel when fully phased in).

KEY FACTS AND FIGURES


7 East-West trade lanes 

- Asia / US West Coast
- Asia / US East Coast
- Asia / Middle East
- Asia / Mediterranean
- Asia / North Europe
- Middle East – India / Europe
- Transatlantic

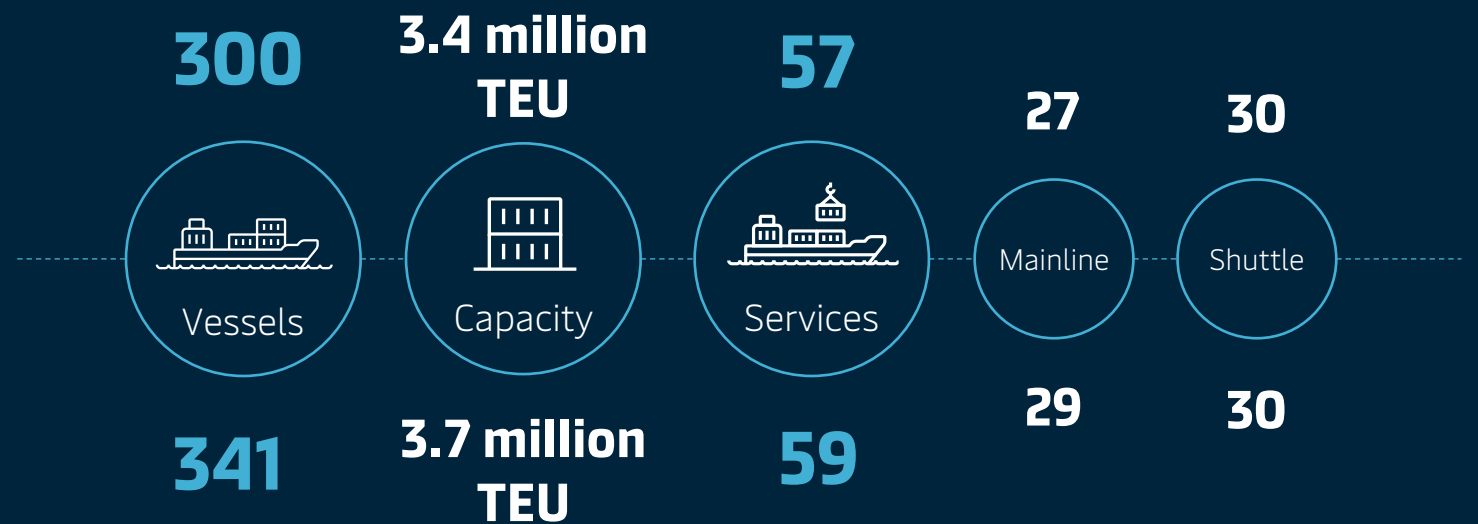
30% 

increase in capacity at APMT Hubs from **USD 3+ bn in investments**

transshipment hubs

located like "pearls on a string" 

Trans Suez Network

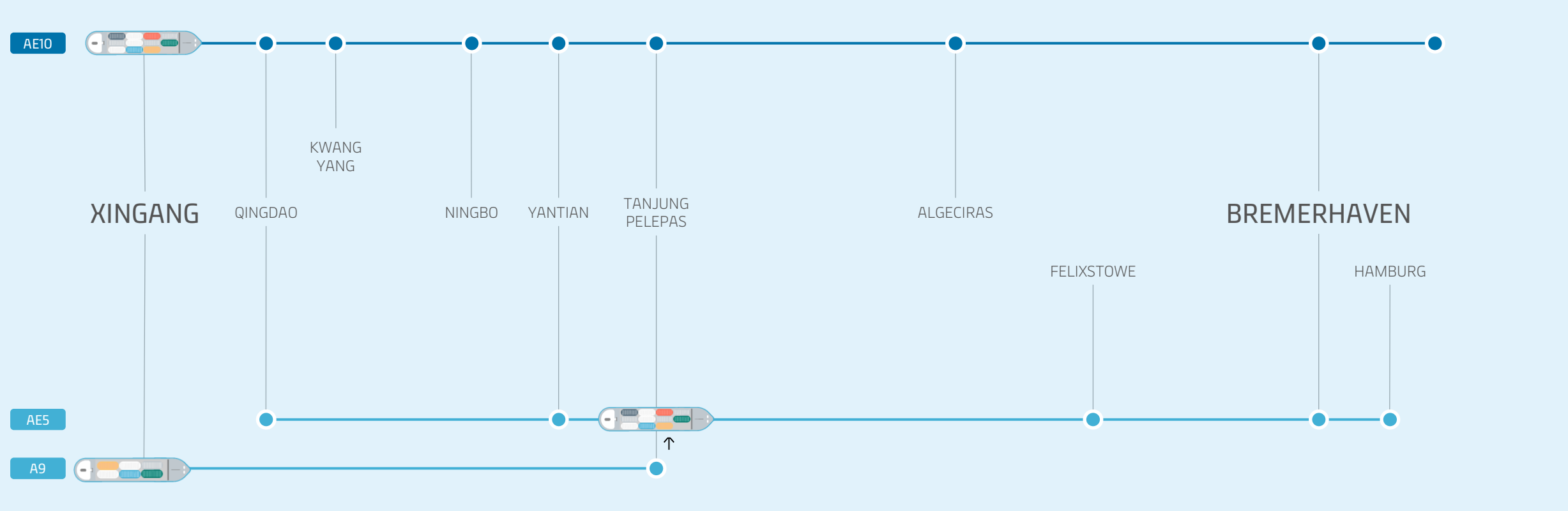


Cape of Good Hope Network

How does the Network of the Future compare with Today's Network?

Below you can see the current network comparative to the Network of the Future the example here is a typical route for container shipping from North China (Xingang) to Germany (Bremerhaven).

Today's Network



Network of the Future

Today's Network:

7 stops



Network of the Future:

3 stops

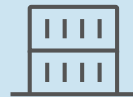


Harnessing the potential of our **TRANSSHIPMENT HUBS**

Seamless collaboration between APMT, Hapag-Lloyd and Maersk, along with our strategically located hubs and integrated logistics services enables us to deliver over 90% service reliability.

APM Terminals has already invested USD 3 billion in 2020-23 for a 30% increase in capacity, with further investments being made by both APM Terminals and Hapag-Lloyd to continue enhancing hub capabilities.

Expanded Capacity



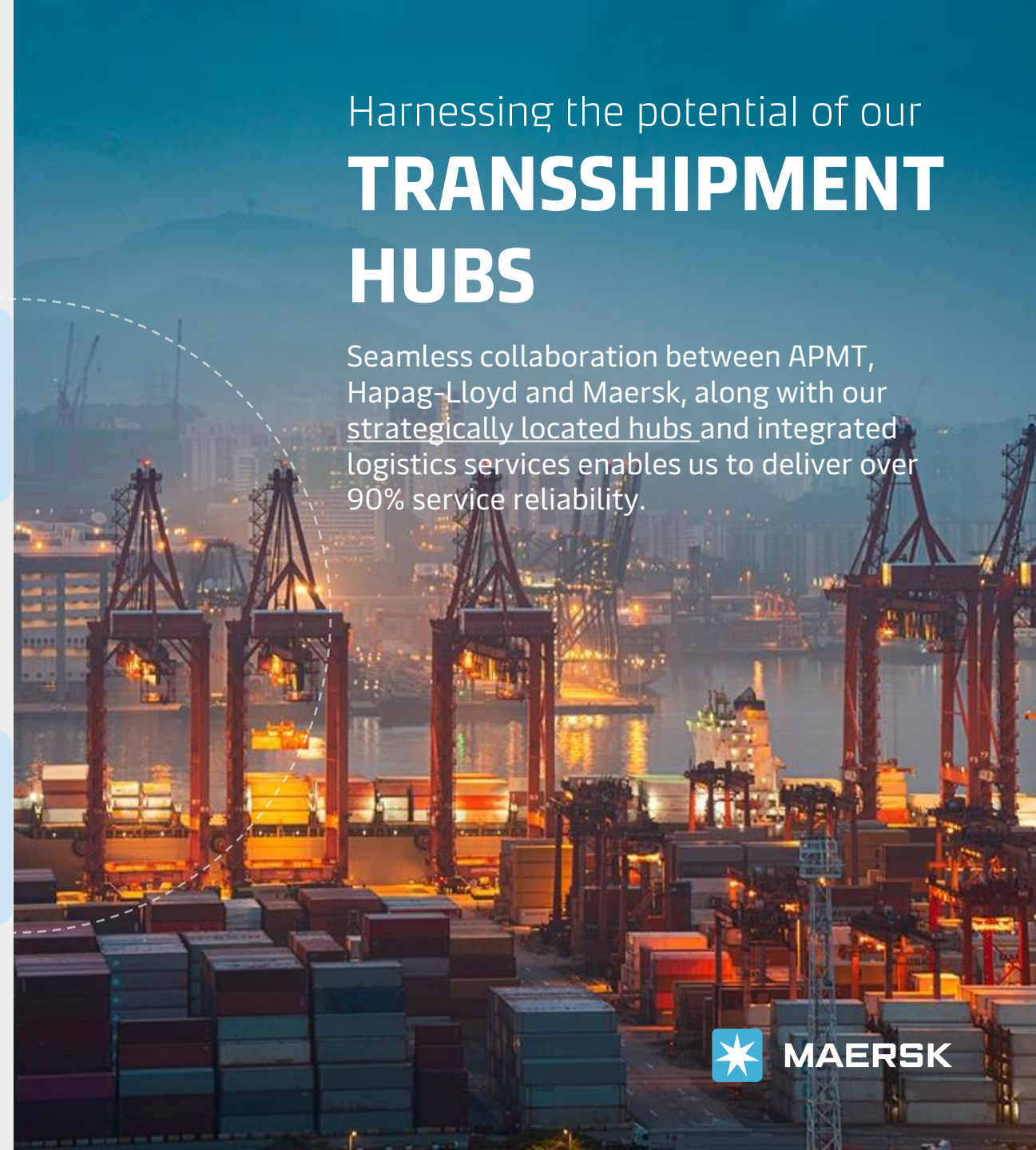
APMT hubs have seen a 14% rise in productivity over the last years, which have helped reduce port stays by 15-20%, with further improvements expected as upgrades continue.

Increased Productivity



Our hubs deploy **Port Mirror** to simulate terminal operations to forecast potential issues like congestions or of equipment availability, and **Berth Planner** to optimise vessel lineups and berth planning.

Tech-led Operations



Unlocking reliability with our

FLEET OF SHUTTLES

The Network of the Future will be covered extensively through our mainliner services, supported by dedicated shuttle services in strategic markets.



More Agility

The new network leverages a fleet of shuttles to unlock greater agility, enabling the swift isolation of issues and control of operational bottlenecks to prevent network-wide impact.

Extension of Mainlines

The shuttles have similar sizes and capacity, will call on fewer ports, be fully controlled by Maersk and enjoy the same priority at terminals, enabling greater flexibility to cater to fluctuating demand dynamics.

Ability to Scale

Planned expansions across the fleet and network enables us to quickly add capacity and volumes to support your growth.

HOW WILL WE DELIVER THE NETWORK OF THE FUTURE?

Service reliability of 90% delivered through:



- Leaner loops, with mainline services calling on fewer ports.
- Single operator for mainline loops (either Maersk or Hapag-Lloyd), reducing executional complexity.
- More calls on APM Terminals, where we have operational control and priority handling.
- Agreed contingency handbook for delay duty mitigation.

Speed delivered through:



- The optimised network enabling competitive transit and lead times across strategic corridors.
- Dedicated shuttles with short sailing distances enabling agile routing and greater flexibility of schedules.
- Strategically located transshipment hubs, which are being made more efficient with investments by Maersk, Hapag-Lloyd and APMT.

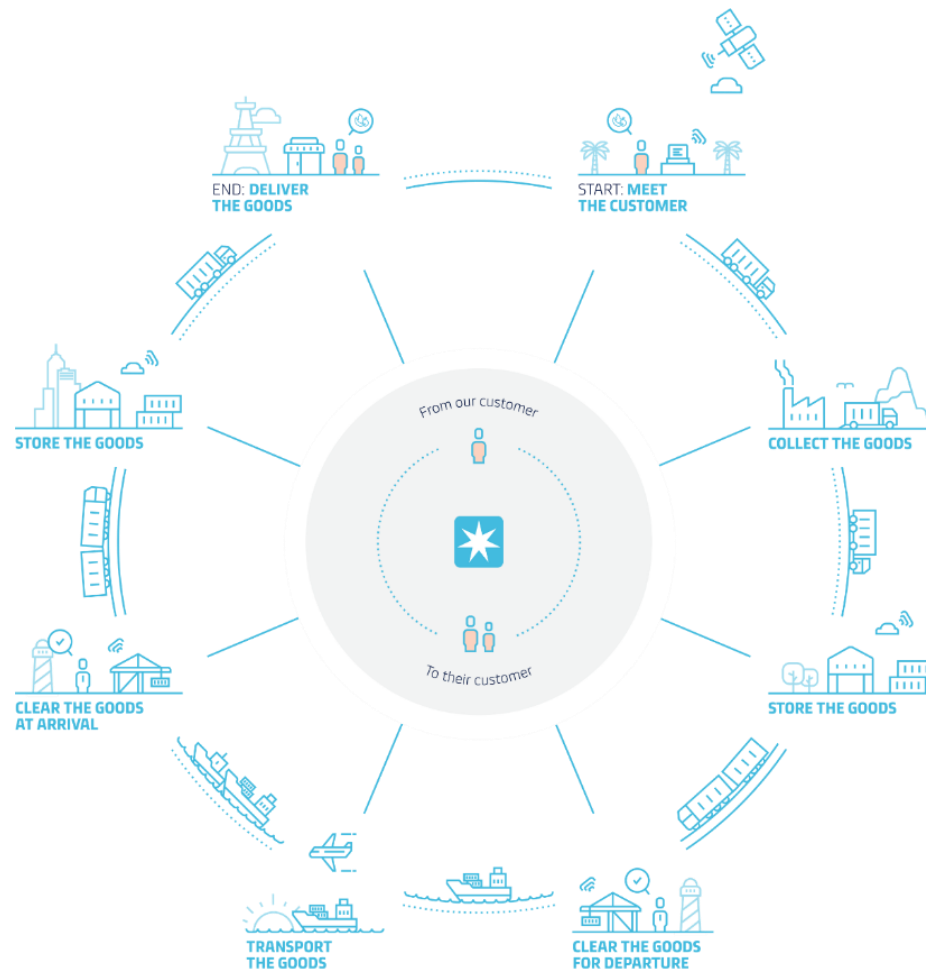
Global reach delivered through



- Vast network of our combined mainline, shuttle and hub services, ensuring same geographical coverage as 2M alliance today.
- Continued investments in fleet expansion and route optimisation.
- Teams of professionals with local expertise in 180+ countries.
- Full suite of integrated logistics services enabling true end-to-end service for your supply chain needs.



Connecting, optimising and simplifying global supply chains with Maersk Integrated Logistics



- Get more than just the power of our new ocean network by leveraging our **suite of integrated logistics products and services** to seamlessly transport your goods across the world.
- Worried about landside transportation at origin or destination? Simply add on [Maersk Inland Services](#) to your Ocean contracts and we'll take care of the rest.